

Gallery Buzzz — July 2011 Happenings



July is FOR All Things Patriotic

For the month of
July we will high-
light the pride we

have for our country. Visit the feature room
to view our artists feelings of patriotism.
Think Red, White and Blue.

Artists drop off work before Thursday. Hang-
ing will be on Thursday, June 30..

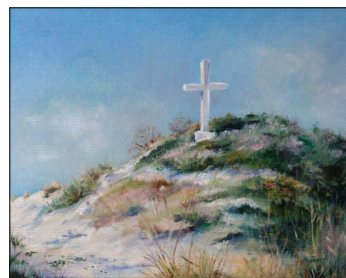
Reception will be Friday, July 1 from 5 to 7.



Basket Weaving

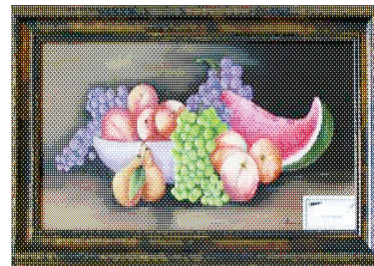
Tuesday, July 26 9 AM to 3. Artist
Mary Ellen Shugart will be teaching
the Wool Drying basket. Bring Lunch.
Class Full

Tuition is \$15 for members \$20 for
non-members. Special order supplies
is \$23.00. Legs are not included,



Soft, Medium, & Hard Pastels - Open to All Levels Every Thurs- day - Morning session 10:00 – 12:30 or Afternoon session 1:00 – 3:30 Artist *Elaine Woodward* will pro-

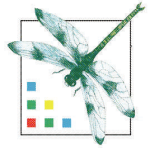
vide students with individual instruction, and suggestions.
Elaine encourages new students to explore differences in
pastels, techniques, papers and subject matter. You are wel-
come to bring lunch or a snack if you wish. **Tuition per
session: Foundation members \$15 Non-members
\$20. - Morning Class is Full.**



Oils for Beginners Every 2nd & 4th Wednesday

- **Session is 9:00 – 2:00** Artist *Jean Norris* will
provide individual instruction and helpful hints to
students. Participants are encouraged to bring a lunch
since the session continues into the afternoon.

Tuition per session: Foundation members \$20,
Non-members \$25.



SANTA ROSA
ARTS & CULTURE FOUNDATION
PRESENTS



Get A Taste For Art



A

Luxurious
Delightful

C H O C O L A T E

Experience

ENTERTAINMENT

ART, MUSIC, SONG, DANCE

Date: Saturday, July 30, 2011
Time: 7 p.m. until 9 p.m.
Location: County Auditorium - Milton, FL
Attire: Formal, Semi-Formal, Business Dress

\$25 donation or \$375 Sponsors Table for 8

Music • Art • Silent Auction • Heavy Hors D'oeuvres • Royal Cupcake Challenge
Culinary Exhibition

Contact Ann Scott 850-393-0121

Enjoy an exquisite evening of Chocolate, food and entertainment